

APM403 CONTROLLER

Intuitive and Versatile

The APM403 controller is simple to use and comes with built in intuitive configurations to cater to different backup system setups. It is available in 2 different models. The APM403S is specially design to offer the best command and control capabilities for a single generator set operation. The APM403P offers the additional versatility of paralleling multiple generator sets together or even parallel together with mains.

The APM403 controller is designed for low voltage (LV) industrial diesel generator sets and its remote management and supervision functions allow monitoring and even operation of the generator sets at anytime, anywhere. Added geolocation function using GPS allows the operator to accurately locate the installation sites of generator sets and manage a pool of generator sets over a large area.

FEATURES

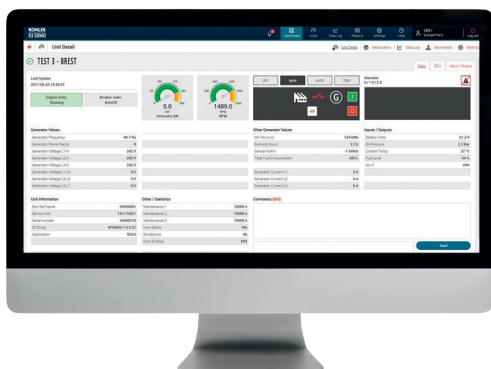


APM403 CONTROLLER

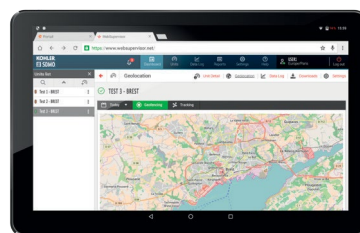
Simple Control of Diesel Generator Sets

WEBSUPERVISOR

The APM403 has a remote management and supervision web interface available as an option. The Websupervisor allows the users to monitor and evaluate the operation of the generator sets at any time, from anywhere. The generator sets operating parameters are sent to a server via GSM (3G or 4G) communication where user can access the parameters via their mobile devices. Added security measures such as access by passwords only, allow user authorization to be configured and adjusted as required. Email alert messages can also be configured to alert users on occurrence of predefined events.



Websupervisor Dashboard



Generator Set Location Tracking on Mobile Device

- Remote management functions
 - Start and stop generator sets
 - Open and close circuit breakers
 - Online parameters updating
 - Supervision functions
 - Periodic dashboards displaying generator sets availability
 - Monitoring of maintenance schedule
 - Data archiving
 - Display of physical and mechanical values
 - Display of generator sets status
 - Display of generator sets event stacks
 - Generators sets status notification
 - Location tracking of installation (GPS option)

OPERATION CONDITIONS	
Operating temperature	-20°C to +60°C
Storage temperature	-20°C to +70°C
EMC	
Certification	CE / UL
Electromagnetic compatibility directive	2014 / 30 / UE
SAFETY	
Low voltage directive	2014 / 35 / UE
ELECTRICAL MEASUREMENTS	
Frequency	50Hz / 60 Hz
Nominal voltage range	86.6 to 480 VAC phase / phase
Nominal current range	In = 5A
Battery range	8 to 36 VDC
COMMUNICATION PORTS	
Standard	CAN USB Host, USB, RS-485, SNMP, ModBus
Optional	Ethernet, GSM, GPRS, Airgate, TCP/IP
LANGUAGES	
Languages available	English, French, Spanish, Italian, Dutch, German, Brazilian Portuguese, Turkish, Norwegian, Polish, Chinese, Russian